

W&H PEACOCK
AUCTIONEERS & VALUERS

Mid Century Design

Bedford Auction Centre
Friday 17th February | Commencing at 10.30am

Viewing: Friday 10th February 9am - 8pm
Saturday 11th February 9am - 5pm
Thursday 16th February 9am - 5pm
and Morning of Sale from 9am
www.peacockauction.co.uk

1

Soren Hansen for Fritz Hansen, a three-seater highback sofa, designed in the 1940's, 8000-Series, button upholstered striped upholstery with a stained beech frame, l. 167 cm *SFP

Est £400 - £600



2

Kurt Olsen for Slagelse Mobelfabrik, an early 1960's Danish three-seater curved or 'banana' sofa upholstered in cream with exposed teak arms and tapering legs, Model 220, l. 178 cm *SFP

Est £400 - £600



3

In the manner of Poul Henningsen (1894-1967) for Louis Poulsen, a Danish red enamelled four-tier ceiling light, d. 40 cm

Est £80 - £120





- 4 A 1970's Danish purple enamelled ceiling light of trumpet form

Est £50 - £80

- 5 A G-Plan 'Fresco' Range teak and crossbanded sideboard, the four central drawers flanked by two pairs of doors, l. 211 cm

Est £200 - £300

- 6 A 1960's Danish teak trolley with organic raised sides, on tapering legs with castors, 66 x 48 cm

Est £40 - £60

- 7 A 1960's Danish teak circular sewing table, the lift lid enclosing a swivel 'basket', on three circular legs, d. 47 cm

Est £50 - £80

- 8 A 1960's Danish oak bedside table with an aluminium surface, single drawer and circular tapering legs, w. 50 cm

Est £80 - £120

- 9 In the manner of Greaves & Thomas, a 1960's teak framed sofa bed upholstered in brown fabric on teak tapering legs with black pads *SFP

Est £300 - £400

- 10** A 1960's Danish teak bedstead with a pair of integral single-drawer bedside cabinets, interior 150 x 190 cm, headboard w. 226 cm

Est £150 - £250



- 11** A pair of 1960's Danish high and lowback armchairs upholstered in pale green on oak legs *SFP

Est £300 - £500

- 12** A 1960's Danish teak 'surfboard' style occasional table on tapering legs, 125 x 50 cm

Est £80 - £120

- 13** A 1960's Danish oak three-drawer bedside cabinet on tapering legs, w. 60 cm

Est £80 - £120



- 14** A 1950/60's Danish mirror, the circular plate within a teak and maple crossbanded frame, with a light mounted to the side, 68 x 69 cm

Est £100 - £150



- 15** A 1960/70's Danish teak framed wall mirror, Aarhus label verso, 118 x 42 cm

Est £80 - £120



- 16** Verner Panton for Louis Poulsen, a 'Panthella' floor lamp in white opal acrylic, label to the interior

Est £200 - £300

- 17** Mads Caprani for Caprani Light A/S, a 1970's white sweeping arc lamp suspending a pleated shade

Est £100 - £150

- 18** In the manner of Paolo Piva, a tubular dining table with a glass surface, 150 x 150 cm

Est £150 - £200

- 19** Professor Tim Threlfall (1940-1999), 'Backward Glances', a stoneware relief, 52 x 35 cm
*Inspired by a trip to New York in 1981, Tim produced this range over the following four years. A set of six limestone panels are on display in the Language Block of Bablake School.

Est £100 - £200

- 20 Richard Hunt (American, b. 1935), 'Landscape Variations', a brass sculptural art work mounted in a frame, 26 x 26 cm, with the original black box

Est £200 - £300



- 21 Gerard van Den Berg for Montis, a 'Butterfly' chair with a black steel frame, nylon mesh seat and red leather overhanging seat cushion *SFP

Est £400 - £600



- 22 A 1980's chromed tubular coffee table of Z-form with a rectangular glass surface, 89 x 59 cm

Est £50 - £80

- 23 A pair of German folding chairs in brown and white, designed in 1971 by Team Form AG, manufactured by Interlubke

Est £60 - £100

- 24 Kai Kristiansen for FM Mobler, a set of five various 1960's Danish teak wall shelves together with three associated uprights, KK label incorporating Danish Control Mark to the rear of one shelf, w. 86 cm each

Est £150 - £200





- 26** A Model 172B iconic freeform ceiling light shade designed by Poul Christensen for Le Klint, moulded maker's mark to interior

Est £60 - £80

- 25** Ronald Homes for Conelight, a 1970's brown perspex adjustable twin-spot floor lamp

Est £80 - £120

- 27** A modern 'Turbo' sculptural white ceiling light designed in 1965 by Louis Weisdorf for Gubi

Est £100 - £150



28

Jo Hammerborg for
Fog & Morup, a 1960's
Modernist 'Horisont'
adjustable wall light with
aluminium shade and
steel grey enamelled
shaft

Est £80 - £120



29

A set of six brass 'kitsch'
clothes hangers

Est £30 - £40

29



30

A 1960's tubular wall-
mounted hat and coat
rack or shelf with a
mirrored back, w. 58 cm

Est £30 - £50



- 31** A 1960/70's Dutch modular wall system designed by Tjerk Reijenga for Plastro including red, yellow, green, black and white enamelled shelves and trays, a desk surface and the associated uprights

Est £200 - £300



- 32** A 1960's Danish mirror, the bevelled glass within a teak frame, stamped 'Made in Denmark' to the reverse, 117 x 42 cm

Est £80 - £120

- 33** A 1960's Brazilian Modernist three-seater sofa or loveseat by Percival Lafer, Model MP-41, the pau ferro frame supporting a black button-upholstered seat, l. 217 cm *SFP

Est £500 - £700

- 34** Two German bakelite cutlery sets on stands by Solingen

Est £30 - £50



- 35 A pair of Swedish Hemi Klot 3 table or wall lamps in brown

Est £30 - £50

- 36 A 1970's Danish aluminium ceiling light with amber highlights together with a pair of white enamelled ceiling lights (3)

Est £30 - £50



- 37 A group of Arabia Rosmarin tablewares including a vegetable tureen and cover, various plates and saucers

Est £40 - £60

- 38 A group of Danish Royal Copenhagen cups and saucers decorated in the 'Domino' pattern

Est £30 - £40



- 39 A studio pottery vase of organic form decorated with scales, in the manner of Michael Cardew, monogram to the underside, h. 21 cm

Est £40 - £60

- 40 Adriaan Dekker for Tomado, a 1950's Dutch bookcase shelving system including two wall-mounted wirework uprights and two red enamelled shelves and one teak shelf, w. 65 cm, h. 68 cm

Est £60 - £80

- 41** Adriaan Dekker for Tomado, a 1950's Dutch bookcase shelving system including two wall-mounted wirework uprights and three grey, orange and blue enamelled shelves, w. 65 cm, h. 68 cm

Est £60 - £80



- 42** Adriaan Dekker for Tomado, a 1950's Dutch bookcase shelving system including two wall-mounted wirework uprights and three red, yellow and orange enamelled shelves, w. 65 cm, h. 68 cm

Est £60 - £80



- 43** Adriaan Dekker for Tomado, a 1950's Dutch bookcase shelving system including two wall-mounted wirework uprights and three orange, yellow and grey enamelled shelves, w. 65 cm, h. 68 cm

Est £60 - £80

- 44** Adriaan Dekker for Tomado, a 1950's Dutch bookcase shelving system including two wall-mounted wirework uprights and three red, yellow and grey enamelled shelves, w. 65 cm, h. 68 cm

Est £60 - £80

- 45** Adriaan Dekker for Tomado, a 1950's Dutch bookcase shelving system including two wall-mounted wirework uprights and red, yellow and grey enamelled shelves, w. 48 cm, h. 58 cm

Est £40 - £60



- 46 A 1960/70's Danish teak cabinet with two sliding doors, on later tapering legs, w. 80 cm, h. 98 cm

Est £50 - £80

- 47 A 1970/80's Danish teak corner cabinet, the two glazed doors enclosing three glass shelves, on tapering legs, w. 80 cm

Est £80 - £120

- 48 A 1970's Danish tan leather bucket chair on later ebonised legs with castors *SFP

Est £100 - £150

- 49 A Danish teak occasional table with fabric magazine holder, paper label for BRDR Furbo, Spottrup, 45 x 43 cm

Est £40 - £60

- 50 A 1960's Danish teak chest of four drawers, each with a moulded handle, on tapering legs, w. 75 cm

Est £80 - £120

- 51 Colin Melbourne (1928-2009) for Trentham Pottery, a stylised figure of a bull with a green glaze and orange spots, l. 30 cm

Est £60 - £100

51



- 52 A Model 51111 Rhythm Alarm clock in an atomic style case, h. 18 cm

Est £20 - £30



- 53 A group of nine posters including: - 1968 'The Committee', music by Pink Floyd - 1970 'The Other Cinema' Jean-Luc Goddard calendar - 'Stamp Out Photographie' Carteles La Candelaria (x3) - Four further Carteles posters

Est £50 - £70

- 54 Norman Weaver (1913-1989) for Heals, a 1933 poster 'Heals Exhibition of Metal & Glass... Furniture in their Mansard Gallery', Dangerfield Printers, image 75 x 50 cm *Weaver's first job was in the cabinet making department of Heal's of Tottenham Court Road, where he worked as a joiner. After two years he became Heal's manuscript writer and calligrapher. Regular evening classes meant his was able to win a Senior London Art Scholarship to the Central School of Arts and Crafts, Southampton Row, London. During the Second World War he worked for the Ordnance Survey/Royal Engineers as a Cartographic Trade Hand.

Est £200 - £300

55

A 1950's advertising poster for Heals of Tottenham Court Road, 'Contemporary Furniture at Heal's', image 75 x 50 cm

Est £80 - £120

56

Stik (b. 1979), 'Holding Hands (Blue)', signed in black ink, limited edition colour lithograph on wove paper, image 50 x 50 cm

*Stik is a socially-conscious British graffiti artists, known for his large six-line and two-dot stick figures. He began working in Hackney and now paints murals all around the world.

**Please Note: Artist Resale Rights may be applicable on this lot.

Est £400 - £600

57

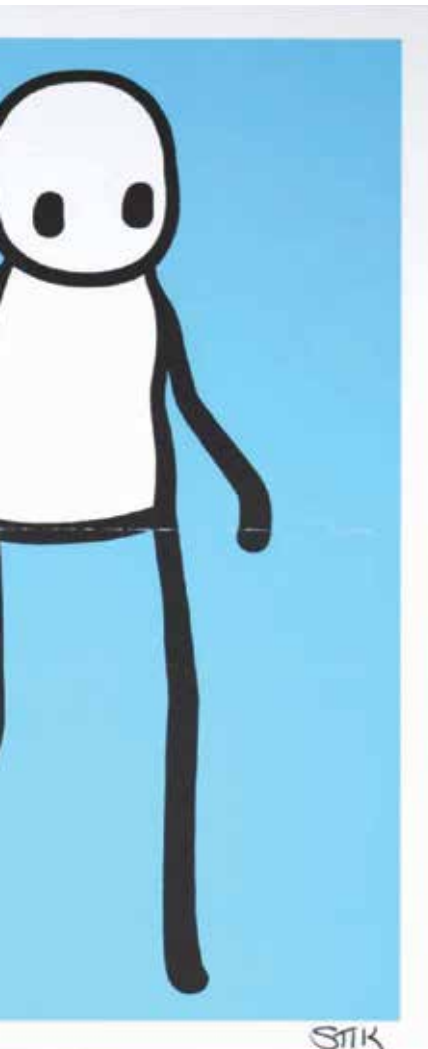


57

Daniel Lang (American, 1935-2015), 'Hyde Park at 4pm', signed and dated 1970 verso with gallery label, oil on canvas, 122 x 122 cm

Est £150 - £200





- 58** Bronwen Morris (Welsh),
An impressionist dressing
table and mirror, signed
verso and dated 1968,
oil on board, image
61 x 90 cm

Est £80 - £120

- 60** Amy Josena (Haitian),
Two African figures
choosing fruit, signed,
acrylic on canvas, image
70 x 95 cm

Est £40 - £60

- 59** After Andy Warhol
(1928-1987), 'Gun,
1981-82', contemporary
digital print, image
59 x 80 cm

Est £30 - £40



- 61** Jean Lurcat (French,
1892-1966), 'Le
Tapageur' (The
Boisterous), a decorative
panel on wool, printed by
hand, inscribed Lurcat,
printed by Corot, Editeur
De Paintres Cartonniers,
Le Tapageur label verso
numbered 183 and
signed by the artist,
170 x 106 cm

Est £300 - £500

- 62 Jean Lurcat (French, 1892-1966) for Saint-Vicens, a hand-painted terracotta plate depicting a dragon, signed Dessin verso, d. 25 cm, together with two further plates by the same hand, d. 21 cm each (3)

Est £200 - £300

62



- 64 A 1960's Swedish wool rya rug, the ground with muted shades of green, brown and pale blue, 125 x 75 cm

Est £50 - £80

- 63 Jean Lurcat (French, 1892-1966), A stylised exotic bird, signed and dated 1956, watercolour, image 35 x 25 cm

Est £800 - £1,200

- 65 A pair of 1960's black button upholstered wingback armchairs on mahogany square frames *SFP

Est £250 - £300



- 66 A pair of 1960's Danish teak adjustable open-fronted bookcases on later tapering legs, w. 88 cm each

Est £120 - £150

- 67 A Swedish 'String' modular shelving system including three white metal floor-standing uprights, h. 108 cm and five various shelves

Est £150 - £200

- 68 A large 1970's twin-spot floor lamp with brass coloured shades and base, on an aluminium shaft

Est £40 - £60

- 69 A 1970's Danish spun aluminium floor lamp with a single adjustable shade

Est £30 - £50

- 70 A near pair of 1970's Danish twin-spot standard lamps with bronzed adjustable shades and aluminium shafts

Est £60 - £80



71

Léa Stein (French, b. 1936), a brooch modelled as a fox head, stamped

Est £40 - £60

71



73



ANDY WARHOL, MARILYN, 1967 London, Tate

72

Léa Stein (French, b. 1936), a brooch modelled as a pink cat, stamped

Est £40 - £60

73

After Andy Warhol 'Marilyn, 1967, London, Tate Gallery', coloured reproduction after the 1980 poster, image 57 x 38 cm

Est £30 - £50

74



74

A Sadler teapot modelled as a yellow racing car, registration OK T42

Est £30 - £40

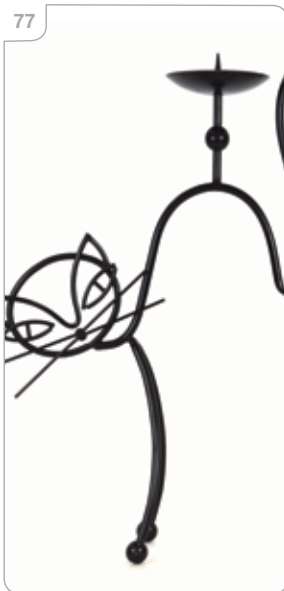


- 75 A French blue drip glazed jug by Poterie Ravel, Aubagne, impressed marks to the side, h. 29 cm

Est £30 - £50



77



- 76 Carl Kohler (Swedish, 1919-2006), A nude lady lying on her side, initialled, signed verso, oil on canvas, image 56 x 115 cm

Est £50 - £80

- 77 Gunnar Ander (Swedish, 1908-1976) for Ystad Metall, a Swedish black tubular metal candle holder modelled as a cat, h. 48 cm

Est £30 - £40

- 78 A pair of Finnish bowls and serving tongs by Arabia Design, d. 30 cm

Est £30 - £50

- 79 Ove Sandberg for Kosta Boda, a 1960/70's blue and frosted glass table lamp of cameo form decorated with stylised figures, signed to underside, h. 31 cm

Est £60 - £80



- 82 Nanny Still (Finnish, 1926-2009) for Nuutajarvi, a 1960's Ruusu vase in turquoise, h. 22 cm

Est £30 - £40

- 80 Gunnel Sahlin (Swedish, b. 1954) for Kosta Boda, a large glass bowl or platter decorated with various colours, signed, d. 35 cm

Est £20 - £30

- 81 Kaj Franck (Finnish, 1911-1989), a 'Purtilo' purple glass vase of cylindrical form, paper label to the side, h. 28 cm

Est £40 - £60



- 83 A Dansk (International) Designs part tea service decorated in the 'Arabesque' pattern including two teapots, sugar bowl, jug, various plates, cups and saucers

Est £80 - £120

- 84 A 1970's Danish brass floor lamp with twin spherical shades

Est £30 - £50

- 85 A Czechoslovakian gentleman's valet or clothes stand in beech, paper label for 'Drevounia' to the underside

Est £40 - £60



- 86 A 1960's Danish teak chest of four drawers with square moulded handles, on later tapering legs, w. 76 cm

Est £80 - £120

- 87 Poul Cadovius (Danish, 1911-2011), a teak 'Royal' shelving system including two pairs of uprights, four shelves and the associated brackets

Est £100 - £150

- 88 A Danish teak writing table, the rectangular crossbanded surface with a single drawer over an indented second tier, on sloping legs, 109 x 61 cm

Est £150 - £200

- 89 Thygesen & Sorensen for Magnus Olesen, Durup, a pair of beech and upholstered stacking chairs *SFP

Est £80 - £120



90



90

Illum Wikkelsø (Danish, 1919-1999), a 1960's 'Plexus' armchair, the oak frame with striped upholstery *SFP

Est £150 - £200

91

A 1960's Danish teak chest, the four long drawers each with an integral moulded handle, on tapering legs, w. 88 cm

Est £200 - £300



92

A 1960's Danish floor lamp with a white shade, brass neck and black stem

Est £30 - £50

93

A 1970's Danish aluminium single-spot standard lamp with an adjustable conical shade

Est £40 - £60



- 94** A 1950/60's Danish floor lamp by Laoni with a piercework adjustable shade

Est £30 - £50



- 96** A 1970's Danish perspex ceiling light in burnt umber, by Fog & Morup, remains of label to interior

Est £50 - £80

- 97** Attributed to Fog & Morup, a 1970's Danish perspex ceiling light in burnt umber with brass tubular support

Est £50 - £80



- 95** A late 20th century Danish black and brass enamelled single spot floor lamp

Est £30 - £40

- 98** A 1970's Danish red and black speckled enamelled pull-down ceiling light

Est £40 - £60

- 99** A 1970's Danish beige enamelled open ceiling light

Est £30 - £50

- 100** A Danish white-enamelled two tier pull-down ceiling light in the manner of Louis Poulsen

Est £40 - £60

Conrad Lewis RCA (1922-2005)

Lewis was a lecturer in Sculpture, Art History & Drawing at Chester School of Art. He exhibited in Liverpool, Amsterdam, Chester, Cardiff, London and St Albans.

101

Conrad Lewis RCA (1922-2005), six plaster figures set within a tubular metal cube, 61 x 61 x 61 cm

Est £100 - £150

102

Conrad Lewis RCA (1922-2005), a carved wooden sculpture of organic form, mounted on a composite plinth, h. 92 cm, together with another similar sculpture (2)

Est £80 - £120

103

Conrad Lewis RCA (1922-2005), a green patinated faux-bronze terracotta head mounted on a pine slab, h. 38 cm, together with four other stylised heads (5)

Est £60 - £80

104

Conrad Lewis RCA (1922-2005), a black finished terracotta head on a pine slab, h. 36 cm, together with two others including one labelled 'Tim's Head' (3)

Est £80 - £120

104



105

Conrad Lewis RCA (1922-2005), a composite sculpture modelled as a nude female seated on a staggered plinth, h. 67 cm, together with three similar figures (4)

Est £80 - £120



- 106** Conrad Lewis
RCA (1922-2005),
'Reflections', collage,
charcoal and paint,
79 x 67 cm, 'Conrad
Retrospective Exhibition'
label verso, together with
'Cage' (2)

Est £60 - £100

- 107** Conrad Lewis RCA
(1922-2005), A nude
figure serenaded by a
stylised swan, linocut,
image 60 x 46 cm

Est £50 - £80

- 108** Conrad Lewis RCA
(1922-2005), 'The
Servants Bear the Body
in- The Hounds Wail
for the Dead', collage,
woodcut and linocut,
61 x 76 cm

Est £30 - £50



- 109** Conrad Lewis RCA
(1922-2005), 'By the
River', oil on board,
image 51 x 41 cm
'Conrad Retrospective
Exhibition' label verso

Est £30 - £50



- 110** Conrad Lewis RCA
(1922-2005), 'Street',
oil on board, image
21 x 16 cm

Est £30 - £50



- 111** Conrad Lewis RCA (1922-2005), 'Rima', monotype and watercolour, dated 1992, image 32 x 22 cm, 'Conrad Retrospective Exhibition' label verso, together with 'Cactus' and 2 x 'Dreaming of Grand Opera' (4)

Est £120 - £150

- 112** Conrad Lewis RCA (1922-2005), 'Self-Portrait', oil on canvas on board, 54 x 44 cm, 'Conrad Retrospective Exhibition' label verso, together with an oil of a gentleman smoking a cigarette (2)

Est £50 - £80

- 113** Conrad Lewis RCA (1922-2005), 'Mixed Bathing', wood and lino, image 30 x 57 cm

Est £20 - £30

- 114** Conrad Lewis RCA (1922-2005), 'Purple Cow', ink and crayon, 49 x 75 cm

Est £20 - £30

- 115** Conrad Lewis RCA (1922-2005), 'Lady in the Park', etching, image 23 x 16 cm, together with 'On the Beach' lithograph (2)

Est £50 - £80

- 116** Conrad Lewis RCA (1922-2005), 'A Green Man', collage, 75 x 50 cm, together with 'Georgia' oils, 'Rain Forest I' and 'Rain Forest III' (4)

Est £80 - £120

- 117** Conrad Lewis RCA (1922-2005), 'Bubbles', oils on board, 29 x 24 cm, 'Conrad Retrospective Exhibition' label verso, together with 'Hotel Foyer' (2)

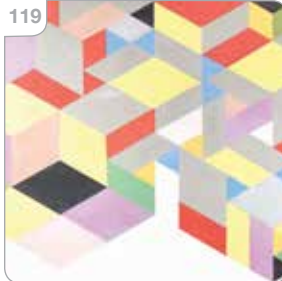
Est £40 - £60

- 118** Conrad Lewis RCA (1922-2005), A nude female within a stylised forest, acrylics, image 72 x 97 cm, together with 'Garden Reverie' gouache, 'Lady in the Park III' oil and 'Flower Fairy' collage and paint (4)

Est £100 - £150

- 119** Conrad Lewis RCA (1922-2005), Geometric colours, acrylics on board, image 122 x 138 cm

Est £60 - £80



- 120** Conrad Lewis RCA (1922-2005), 'The Designer', linocut, dated 1989 verso, image 75 x 54 cm

Est £50 - £80



- 121** Conrad Lewis RCA (1922-2005), 'Cedar Tree, St Mary's Churchyard, Redbourn', oil on board, image 48 x 73 cm

Est £30 - £40

- 122** Philippe Starck for Saba, a 'Jim Nature' portable television, 1994 *This model was produced using high-density chipboard as an environmentally-friendly alternative to black plastic.

Est £200 - £250



- 123** An early 20th century Continental relief-decorated wall plaque inscribed 'Edele Vrouw', d. 25 cm

Est £40 - £60

- 124** A pair of 1970's table lamps with chromed bodies and purple perspex sectional shades, h. 41 cm

Est £100 - £150

124



125



- 125** Martyn Benson (1918-2010), Still life, signed and dated '88, oil on canvas laid onto artists' board, 59 x 44.5 cm

Est £40 - £60

- 126** Fritz Haller and Paul Scharer for USM Haller, an open modular storage unit or divider including five shelves, h. 144 cm, 77 x 37 cm

Est £200 - £300

- 128** A set of three DSS wirework stacking chairs with 'Bikini' pads, originally designed by Charles & Ray Eames, manufacture attributed to Vitra, together with a 2010 'Eames Plastic Chair' by Vitra on an 'Eiffel Tower' base (4)

Est £300 - £400

- 127** A set of three Italian L'Eau light-weight stacking chairs by Calligaris

Est £60 - £80



- 129** Lord Norman Foster (b.1935) for Walter Knoll, a pair of Model 500 armchairs upholstered in grey leather, on brushed matt chrome plated legs *SFP

Est £500 - £800

- 130** EOOS for Walter Knoll, a set of eleven 'Jason' boardroom armchairs upholstered in black leather on polished tubular legs *SFP

Est £200 - £300

130



129



131

- A Hans 'Wegner en Stolemager' Kunstindustrimuseet (Danish Museum of Art & Design) exhibition poster, 1 April-21 May 1989, 77 x 55 cm

Est £50 - £80

132

- William Scharff (Danish, 1886–1959), A spruce forest, signed and numbered 24/250, lithographic print, image 51 x 71 cm

Est £50 - £80



Mid-Century Design Soft Furnishings Policy

The Furniture and Furnishings (Fire) (Safety) Regulations 1988 (as amended in 1989 and 1993) state that all soft furnishings holding foam must conform to BS 5852 standards. This means that any post-1988 furniture will need to bear a fire label for auction purposes.

The following exceptions apply:

- Items constructed pre-1950. [Regulation 4(a)]
- Items being sold to someone who is in the business of reupholstering furniture. [See Regulation 4(b) and Consumer Protection Act 1987, s.46(7)]
- Items being sold to someone who is in the business of dealing in furniture. [Regulation 14(1)]
- Items being sold that will not be used in a domestic setting in the UK; e.g. for export, for use in a museum or theatre, as a work of art. [Regulation 3(1a) and 4(c)]

The Mid-Century period has been recognised as an area of increased interest to collectors for many years now. The relevant soft furnishings in our sales have been carefully selected to be collector's pieces which are purchased for their design qualities.

Soft furnishings in this sale are being sold as collector's items and are NOT intended for private use in the UK. They may not be in compliance with the Furniture & Furnishings (Fire)(Safety) Regulations 1988 and should be re-upholstered to conform to BS 5852 prior to any use in a domestic dwelling.

Bids are only accepted on the agreement that the furnishings will not be used in a domestic dwelling in the UK.

This policy is in-line with all major UK auctioneers and the Mid-Century trade.

133



133

Swedish School, A girl riding a carousel, initialled SC, oil on canvas, image 44 x 53 cm

Est £50 - £80

134

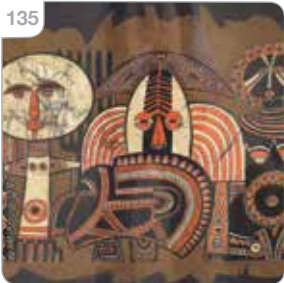
Niels Peter Bolt (Danish, 1885–1965) A still life, signed, pastels, image 70 x 46 cm

Est £100 - £150

134



135



135

1980's School, A Tribal-style batik, signed Fenchí, image 53 x 78 cm

Est £30 - £50

136

In the manner of Stilnovo, an Italian chandelier, the brass frame with black highlights and supporting six opaline glass shades

Est £200 - £300





- 137** A Swedish brass adjustable floor lamp by Bergboms, label to underside

Est £200 - £300

- 140** A Swedish halv-flossa rug decorated with red bands and geometric shapes, 94 x 54 cm

Est £50 - £70

- 141** A 1960/70's Swedish rya rug, shades of red, 228 x 167 cm

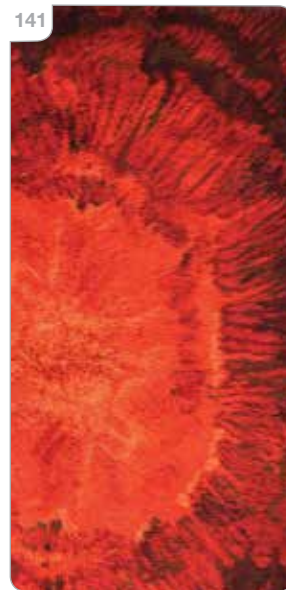
Est £100 - £200

- 138** A German cased-glass vase, grey tapering to black, by Zwiesel, paper label to the side, h. 50 cm

Est £20 - £30

- 139** Maija Isola (1927-2001) for Marimekko, a pair of 1965 'Kaivo' curtains in orange and brown, w. 125 cm, drop 245 cm

Est £80 - £120



- 142** A 1960/70's Swedish rya rug, shades of blue and purple, 200 x 145 cm
Est £100 - £150

- 143** In the manner of Robin Day, a set of four 1940/50's utility dining chairs *SFP
Est £50 - £70

- 144** A 1930/40's beech and woven lounge armchair
Est £50 - £70



- 145** Olof Pira for String AB, a 1960/70's Swedish beech modular shelving system or room divider including twenty shelves, one sloping surface, five white metal uprights, various connectors and one wall-mounting bracket, w. 90 cm per shelf, paper labels

- 146** A 1980's 'Roman Ruin' faux-stone coffee table, 148 x 77 cm
Est £200 - £300

Est £300 - £400



147



147

A 1960's tan leather modular daybed with button-type stitching
*Originally purchased from a Leamington Spa department store

Est £100 - £150

148

Attributed to Bernard Rooke (b.1938), a pottery table lamp of cuboid form with a hessian shade

Est £50 - £80

149

Attributed to Bernard Rooke (b.1938), a pottery table lamp of conical form with a hessian shade

Est £50 - £80



150



150

Bernard Rooke (b.1938), a segmented florally-modelled pottery floor lamp with a central smoked glass table, initialled to the base, with an associated shade, h. 115 cm excl. shade or fitting

Est £400 - £500

151

A 1980's brown leather office chair by Evertaut, on a five-star swivel base with castors *SFP

Est £80 - £120

152

John & Sylvia Reid for Stag, a 'C Range' oak and black laminate desk, the folding surface enclosing a mirror and storage compartment, over three drawers, on turned beech legs, w. 88 cm

Est £100 - £150



153



153

In the manner of Milo Baughman (1923-2003), a three-tier chrome-plated table with glass inserts and two swivel shelves, d. 50 cm

Est £80 - £120

154

Robert Heritage for Archie Shine Ltd., a rosewood 'Hamilton' sideboard, designed in 1958, with two large doors and four drawers, l. 229 cm

Est £600 - £1,000



157



156 Hans Wegner (1914-2007) for Fritz Hansen, a 1950's teak circular 'Heart' table on three turned beech legs, FH stamp to underside, d. 120 cm

Est £300 - £500

157 Gerrard Vollenbrock for Leolux, a 'Scylla' aqua leather three-seater sofa with a chromed frame, together with a matching pair of armchairs *SFP

Est £300 - £400

155

Attributed to Dyrlund, a 1990's Danish faux-rosewood cherry sideboard with three drawers and three doors on a plinth base, l. 178 cm

Est £100 - £200

156



158 Glen Oliver Low for Thonet, a set of six S60 meeting chairs with chromed cantilever frames and black upholstered seats *SFP

Est £400 - £600





- 159** Arne Jacobsen for (Republic of) Fritz Hansen, a pair of 'Oxford' highback desk chairs with aluminium frames, five star bases and castors, upholstered in cream leather *SFP

Est £200 - £300

159



160



- 160** Clarice Cliff (1899-1972) for Newport Pottery, a Bizarre Range suite of 'Crocus' pattern tablewares including an open bowl, d. 23 cm, sandwich plate, 29 x 15 cm, six bowls, d. 16 cm and six side plates. d. 14 cm

Est £200 - £300



- 161** Anita Klein (b. 1960, Sydney), 'Flying Baby', Based on an afternoon with Rebecca and Solomon Eames, linocut printed in colours, signed and dated '11, numbered 4/50, image 24 x 18 cm
*Anita Klein studied at Chelsea and the Slade schools of art. She is a fellow and past president of the Royal Society of Painter Printmakers (RE).

Est £100 - £150

- 162** A near pair of Danish white enamelled graduated ceiling lights of trumpet form, including one with a Horn label

Est £60 - £100



- 163** A near pair of Danish white perspex and opaque open ceiling lights

Est £60 - £100

- 164** A 1970's Danish aluminium pendant ceiling light with perspex motifs

Est £30 - £50

- 165** A 1970's Danish copper-coloured pendant ceiling light with perspex motifs

Est £30 - £50

- 166** A 1970's Danish brass coloured three-tier overlapping ceiling light

Est £40 - £60

- 167** Johannes Andersen (1903-1991) for CFC Silkeborg, a 1960's circular crossbanded coffee table with a second wicker under-tier, on tapering legs with pads, faint stamp to underside, d. 100 cm

Est £150 - £200



- 168** A 1970/80's Danish brass coloured twin spot adjustable floor lamp

Est £30 - £50



- 169** A 1960/70's Danish beech and aluminium segmented floor lamp with an associated shade

Est £50 - £80

- 170** Carl Christensen, a Danish black metalwork floor lamp with a later shade

Est £40 - £60

- 171** Godfrey Syrett, a 1970's chromed lounge chair with green vinyl upholstery, label to the underside *SFP

Est £50 - £70

172



172

Gustav Axel Berg for Bröderna Anderssons, a 1960's Swedish beech and webbed cantilever armchair, stamp to underside

Est £150 - £200

173

Pearson Lloyd for Walter Knoll, a pair of 'Oscar' armchairs upholstered in grey on four-star swivel bases *SFP

Est £300 - £500



174

Hans Wegner (Danish, 1914-2007), a 1960's fully-upholstered three-seater sofa on teak tapering legs, Model AP33, Danish Control Stamp to the underside, l. 200 cm

Est £300 - £400

174





176



175

A 1960's Cintique click-clac sofa bed with an oak frame, l. 199 cm
*SFP

Est £150 - £200

176

A set of twenty 1970's Danish 'Model H' ply and tubular stacking stools by MH Stalmobler A/S, classroom or laboratory

Est £300 - £500

177

A set of three 1960/70's teak nesting occasional tables on tapering legs, 'Pac-man' style, max d. 54 cm

Est £80 - £120

177



- 178** A 1960's Danish oak framed wall mirror, 101 x 45 cm

Est £30 - £50

- 179** A 1960's Danish teak framed mirror of sloping rectangular form inlaid with brass, 98 x 42 cm

Est £50 - £80

- 180** Two 1960's Danish teak framed wall mirrors, 67 x 40 cm and 54 x 35 cm (2)

Est £60 - £80

- 181** Two 1970's Danish single spot floor lamps with bronzed shades (2)

Est £50 - £80

- 182** A 1970's Danish brass coloured twin-spot standard lamp together with a single lamp (2)

Est £40 - £60

- 183** A group of four Danish black and white enamelled floor lamps (4)

Est £80 - £120

- 184** Hans-Agne Jakobsson for Markaryd, a brass ceiling light with blue tassel fringe, Model T601/M, d. 28 cm

Est £500 - £700





185

- 185** A pair of 1940/50's Fritz Hansen beech and button upholstered 'flat-pack' armchairs in green *SFP

Est £300 - £400

- 186** A 1960's Danish teak modular shelving system by Poul Cadovius including a bureau, writing table, two uprights, four shelves and the associated brackets

Est £80 - £120

- 187** A 1970's Danish cream enamelled five-tier pull-down ceiling light in the manner of Louis Poulsen

Est £30 - £50

- 188** A Swedish white enamelled ceiling light

Est £30 - £50

- 189** A Danish grey enamelled pendant ceiling light of cylindrical form with a top grill section

Est £30 - £50



190

- 190** Jessie Tait for Midwinter, a 'Stylecraft' Range part dinner service decorated in the 'Primavera' pattern, designed in 1954, including two tureens, six dinner plates, sauce boat, four bowls and five various other plates

Est £80 - £120

- 191** A Robin Day 'Chevron' chair with a teak frame and black metal tubular legs, designed in 1959, lacking cushions

Est £150 - £200



- 192** Borge Mogensen (Danish, 1914-1972) for Karl Andersson & Soner, a Swedish teak open bookcase with adjustable shelves on a plinth base, label to the rear, 135 x 25 x 125 cm

Est £60 - £100

- 193** Borge Mogensen (Danish, 1914-1972) for Karl Andersson & Soner, a Swedish teak open bookcase with adjustable shelves on a plinth base, 135 x 25 x 125 cm

Est £60 - £100

- 194** Borge Mogensen (Danish, 1914-1972) for Karl Andersson & Soner, a Swedish teak open bookcase with adjustable shelves on a plinth base, 135 x 25 x 125 cm

Est £60 - £100

- 195** Borge Mogensen (Danish, 1914-1972) for Karl Andersson & Soner, a Swedish teak open bookcase with adjustable shelves on a plinth base, label to the rear, 135 x 36 x 125 cm

Est £60 - £100

- 196** A pair of 1950's Czech folding cinema seats by Ton (formerly Thonet) in pale beech, w. 105 cm

Est £100 - £200



- 197** A pair of 1950's Czech folding cinema seats by Ton (formerly Thonet) in pale beech, w. 105 cm

Est £100 - £200



- 198** A pair of 1950's Czech folding cinema seats by Ton (formerly Thonet) in stained beech, w. 105 cm

Est £100 - £200

- 199** A pair of 1950's Czech folding cinema seats by Ton (formerly Thonet) in stained beech, w. 105 cm

Est £100 - £200

- 200** An early 20th century mahogany and teak specimen cabinet with exposed dovetail joints, the glazed door enclosing forty-eight labelled drawers, on a plinth base, w. 39 cm, h. 86 cm

Est £300 - £400

- 201** A group of three Danish 1970's aluminium ceiling lights

Est £80 - £120

- 202** A 1970's Danish cream enamelled three-tier ceiling light

Est £30 - £40



- 203** A 1950's ply screen or divider on a pine framework, h. 264 cm, w. 118 cm
*Originally from Allen Hall, a student halls-of-residence at Manchester University.

Est £200 - £300

- 204** A 1950's ply screen or divider on a pine framework, h. 264 cm, w. 118 cm
*Originally from Allen Hall, a student halls-of-residence at Manchester University.

Est £200 - £300



205 A 1950's ply screen or divider on a pine framework, h. 264 cm, w. 118 cm
*Originally from Allen Hall, a student halls-of-residence at Manchester University.

Est £200 - £300

206 A 1950's ply screen or divider on a pine framework, h. 264 cm, w. 118 cm
*Originally from Allen Hall, a student halls-of-residence at Manchester University.

Est £200 - £300

207 Lievore Altherr Molina for Arper, a set of three 'Catifa 46' chairs upholstered in green on chromed four-star swivel bases *SFP

Est £60 - £80



208 Attributed to Jaime Casadesus, a set of six 'Turkana' button upholstered stools on chromed bases *SFP

Est £200 - £300



209



209

After Mies van de Rohe (German, 1886-1969), a 'Barcelona' style two-seater sofa with loose black button-upholstered cushions and a chromed frame *SFP

Est £250 - £350

210

After Mies van de Rohe (German, 1886-1969), a 'Barcelona' style two-seater sofa with loose white button-upholstered cushions and a chromed frame *SFP

Est £300 - £400

211

A Danish white enamelled pendant ceiling light of I-form

Est £30 - £40

212

Kai Kristiansen for VM Vildbjerg Mobelfabrik, a 1960's Danish teak metamorphic 'Elevator' table, converting from a coffee to dining table, 60/106 x 140 cm

Est £300 - £400



illustrated: lot 212, 213

Crazy Horse Saloon



Paris France

- 213** Walter Strack (1936-2021), 'Crazy Horse Saloon Paris France', lithographic poster, image 88 x 51 cm

Est £150 - £200

- 214** After Stanley Mouse (American, b. 1940), 'Keep California Green', Avalon Ballroom, reproduction lithographic poster, image 55 x 38 cm

Est £30 - £50

- 215** Giancarlo Piretti for Castelli, a pair of 'Plia' folding chairs, acrylic seats and chromed frames

Est £50 - £80

- 216** A pair of 1980's 'High-Tech' Movement ceiling lights with grey pierce-work shades and moulded glass diffusers

Est £50 - £80



- 217** A Swedish art glass tazza and cover surmounted by a red finial by Westholms, d. 23 cm, together with a matching pair of green paperweights by the same factory (3)

Est £60 - £80

- 218** Bertil Vallien (Swedish, b. 1938) for Kosta Boda, a square glass dish inset with a silvered foil and copper-coloured stylised figure, signed, numbered 7050306, w. 18 cm

Est £70 - £90



- 219** A group of three glass faces in the 'Masqot' Range by Mats Jonasson, including 'Batzeba', 'Domino' and 'Kiwok' (3)

Est £100 - £150

- 220** Lars Hellsten (Swedish, b. 1933) for Orrefors, an 'Odyssey' glass bowl, d. 22 cm, together with a red cased-glass vase and a floral bowl by the same factory (3)

Est £50 - £80

- 221** A group of six Swedish glass paperweights by Mats Jonasson together with an LSA International decanter and various other glassware (13)

Est £40 - £60





- 222** A set of eight Wedgwood limited edition 'The Bizarre World of Clarice Cliff' cabinet plates including 'Farmhouse', 'Orange House', 'Red Roofs', 'Fantasque Mountain', 'Poplar', 'Orange Roof Cottage', 'Blue Lucerne' and 'House & Bridge', all with c.o.a.

Est £100 - £150

- 223** Geoffrey Baxter for Whitefriars, a 'Mallet' vase in kingfisher blue, Model 9818, h. 18 cm

Est £50 - £80

- 224** Geoffrey Baxter for Whitefriars, a 'Bark' vase in cinnamon, h. 19 cm

Est £40 - £60

225



223



- 225** A 1960's Whitefriars 'knobby' glass vase, converted to a table lamp, h. 26 cm excl. fitting

Est £50 - £80

- 226** Geoffrey Baxter for Whitefriars, two early oval shallow dishes, 9661, in indigo and willow, w. 28 and 26 cm respectively (2)

Est £40 - £60

- 227** William Wilson and Bernard Fitch for Whitefriars, a 1954/57 clear crystal bowl, C207, d. 23 cm, together with two Whitefriars hand-made swans (3)

Est £50 - £80

- 229** A Swedish 'contrast' glass bowl by Kosta Boda, d. 22 cm

Est £30 - £40

- 230** A group of three Murano glass millefiori-type paperweights (3)

Est £40 - £60



231

- 231** An Ercol elm coffee table of cushioned oval form, on beech tapering legs, with a second spindle tier, 99 x 83 cm

Est £100 - £150





- 232** An Ercol elm gate-leg dining table with beech supports, 84 x 106 cm, together with a set of four matching 'Goldsmith' chairs with spindle backs

Est £300 - £500

- 233** A contemporary purple bucket-type chair on a chromed swivel base *SFP

Est £50 - £80

233





234

A 1960's bent ply lounge armchair of Danish design with black button upholstery *SFP

Est £100 - £150

235



235

A 1970's Danish white enamelled three-tier ceiling light

Est £30 - £40

236

A 1970's Danish white enamelled and pierce-work ceiling light

Est £30 - £40

237



237

Lord Norman Foster (b.1935) for Tecno, a circular 'Nomos' with a later bevelled glass surface, d. 120 cm

Est £400 - £600

238

Ludwig Mies van der Rohe (German-American, 1886-1969) for Knoll, a set of four 'Brno' chairs upholstered in black leather with circular chromed frames, signed to frames *SFP

Est £400 - £600

239

Benjamin Thut for Belux, a set of three 'Lifto' adjustable table lamps, lacking bases but with clips

Est £100 - £150

238



240

Arne Jacobsen (Danish, 1902-1971) for Fritz Hansen, a Dot 3 stool in teak, stamp to the underside

Est £60 - £80

- 241** An Italian cuboid ottoman or pouf by Minotti *SFP

Est £40 - £60

- 242** Nanna Ditzel (Danish, 1946-2005) for Søren Willadsen Mobelfabrik, a Model 93/4 'cassette' writing table in teak with four drawers, circa late 1950's, 175 x 75 cm

Est £2,000 - £3,000

- 243** Gill Pemberton for Denby, an extensive dinner service decorated in the 'Arabesque' pattern together with seven packs of Denby 'Touchstone' cutlery

Est £150 - £200

- 244** Two boxed Okra perfume bottles and stoppers including 'Merlins Web' and 'Alchemy' (2)

Est £60 - £80

242



- 245** Vicke Lindstrand for Orrefors, a 1930's brandy-shaped vase, signed, h. 21 cm, together with an Orrefors hand-cut bowl (2)

Est £40 - £60

- 246** Belinda Hornsey for Dartington, a blue hooped glass vase in the manner of Litala, h. 23 cm, together with a Finnish glass dish by Litala (2)

Est £30 - £50

247 A group of four Miller's Price Guides, 2002/3, 2005, 2006 and 2007

Est £20 - £30

248 A Scandinavian unsigned clear glass vase of cylindrical form with a twisted stem, h. 32 cm

Est £20 - £30

249 Spare lot

250 In the manner of Loetz, an iridescent lustre vase, h. 17 cm

Est £50 - £80

251 Alan Fears (b.1974), a two-drawer side table overpainted with aqua on a white ground, unsigned, w. 91 cm

*Alan was featured and commissioned for the summer cover of 2019's issue of the Paris Review, he was also shortlisted for the John Moores Painting Prize in 2018. Elsewhere he was commissioned to design and animate fashion brand Marni's short film 'A Rumble in the Jungles of Paris'. He has sold paintings to Noel Fielding and Cillian Murphy. Lots 205-212 are examples of his experimental works before he became a full-time artist.

Est £100 - £150



Hammer Prices - Bedford, November 2022 Sale

1 £85	45 £190	89 £35	135 £1200	183 £90	232 £360	266 £130	300 £140	332 £70
2 £160	46 £65	91 £110	136 £1400	184 £50	233 £170	267 £220	301 £200	333 £55
3 £20	47 £120	92 £300	137 £80	185 £110	234 £300	268 £280	302 £130	334 £50
4 £60	48 £100	93 £40	138 £100	186 £440	235 £280	269 £320	303 £300	337 £100
5 £55	49 £45	94 £45	139 £50	187 £120	237 £1600	270 £700	304 £140	338 £140
6 £30	50 £85	95 £30	140 £130	188 £30	238 £460	271 £380	305 £190	339 £190
7 £20	51 £360	96 £340	141 £300	189 £80	239 £420	273 £100	306 £150	340 £75
8 £50	52 £65	97 £300	142 £22	190 £85	241 £400	274 £150	307 £55	341 £260
10 £100	53 £100	98 £220	143 £22	191 £110	242 £260	275 £65	308 £160	342 £110
11 £85	54 £190	100 £320	144 £120	192 £60	243 £50	276 £90	310 £55	343 £220
12 £180	55 £200	101 £26	145 £280	193 £20	244 £40	278 £650	311 £280	344 £120
13 £500	56 £170	102 £70	146 £240	194 £170	245 £340	280 £440	312 £95	345 £170
14 £130	57 £160	103 £75	147 £30	195 £1600	246 £45	281 £700	314 £150	346 £160
15 £90	58 £75	104 £30	148 £85	196 £40	247 £260	282 £55	316 £220	347 £80
16 £80	59 £170	105 £45	149 £90	197 £50	248 £180	283 £320	317 £80	348 £45
17 £30	60 £700	106 £2230	151 £35	198 £45	249 £60	284 £140	318 £110	349 £130
20 £85	61 £40	107 £800	152 £35	199 £95	252 £24	285 £75	320 £800	351 £95
21 £550	62 £130	108 £900	153 £50	200 £75	253 £95	286 £110	321 £500	352 £120
22 £100	63 £120	109 £260	154 £130	201 £2000	255 £26	287 £170	322 £220	353 £70
23 £65	64 £320	110 £260	155 £150	204 £140	256 £30	288 £60	323 £480	354 £80
24 £50	65 £70	111 £200	157 £22	206 £100	257 £45	292 £45	324 £240	355 £75
25 £55	66 £60	112 £120	158 £26	207 £180	258 £160	293 £200	325 £950	356 £80
26 £440	67 £35	113 £200	159 £40	208 £280	259 £750	294 £20	326 £360	357 £800
27 £280	68 £140	115 £70	160 £30	209 £120	260 £40	295 £75	327 £300	358 £400
28 £950	69 £50	116 £180	161 £1200	210 £280	261 £50	296 £460	328 £200	359 £470
29 £950	70 £110	117 £260	162 £1600	211 £40	262 £45	297 £200	329 £600	362 £50
30 £55	71 £400	118 £650	163 £400	212 £22	264 £30	298 £30	330 £550	363 £95
31 £80	72 £180	119 £30	164 £300	213 £340	265 £110	299 £110	331 £85	
32 £180	73 £150	120 £30	165 £550	214 £190				
33 £140	74 £400	121 £35	166 £55	215 £500				
34 £1200	76 £50	122 £35	167 £190	216 £130				
35 £100	77 £45	123 £35	168 £700	218 £150				
36 £55	78 £45	125 £35	169 £150	219 £380				
37 £110	81 £40	126 £30	170 £20	220 £110				
38 £2300	82 £80	127 £75	171 £75	221 £140				
39 £280	83 £30	128 £70	172 £280	223 £220				
40 £50	84 £50	129 £24	173 £30	224 £40				
41 £200	85 £60	130 £40	175 £20	225 £30				
42 £190	86 £45	131 £40	179 £100	226 £440				
43 £440	87 £65	132 £50	181 £85	229 £35				
44 £190	88 £40	133 £110	182 £100	231 £110				

Next Sale

Bedford Auction Centre
Friday 19th May 2023 | Commencing at 10.30am

Visit our website for full details
www.peacockauction.co.uk